



Mount on all terrains, in no time.

The IronRidge Ground Mount System combines our XR1000 rails with locally-sourced steel pipes or mechanical tubing, to create a cost-effective structure capable of handling any site or terrain challenge.

Installation is simple with only a few structural components and no drilling, welding, or heavy machinery required. In addition, the system works with a variety of foundation options, including concrete piers and driven piles.



Rugged Construction

Engineered steel and aluminum components ensure durability.



PE Certified

Pre-stamped engineering letters available in most states.



UL 2703 Listed System

Meets newest effective UL 2703 standard.



Design Software

Online tool generates engineering values and bill of materials.



Flexible Architecture

Multiple foundation and array configuration options.



25-Year Warranty

Products guaranteed to be free of impairing defects.



360° Product Tour
Visit ironridge.com

Substructure

Top Caps



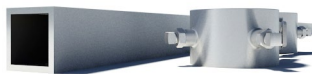
Connect vertical and cross pipes.

Bonded Rail Connectors



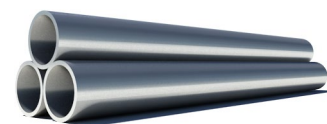
Attach and bond Rail Assembly to cross pipes.

Diagonal Braces



Optional Brace provides additional support.

Cross Pipe & Piers



Steel pipes or mechanical tubing for substructure.

Rail Assembly

XR1000 Rails



Curved rails increase spanning capabilities.

UFOs



Universal Fastening Objects bond modules to rails.

Stopper Sleeves



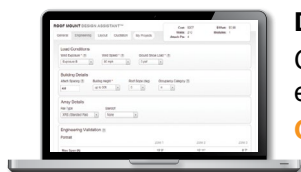
Snap onto the UFO to turn into a bonded end clamp.

CAMO



Bond modules to rails while staying completely hidden.

Resources



Design Assistant

Go from rough layout to fully engineered system. For free.

Go to ironridge.com/design



NABCEP Certified Training

Earn free continuing education credits, while learning more about our systems.

Go to ironridge.com/training