

CORRUSLIDE

INSTALLATION GUIDE

REVISION DATE: 08/13/25

VERSION: v1.0



Clicking the page name will take you to that page

TABLE OF CONTENTS **PAGE 01**

FEATURES & BENEFITS **PAGE 02**

COMPONENTS **PAGE 03**

INSTALLATION **PAGE 04**

DISCLAIMER **PAGE 06**

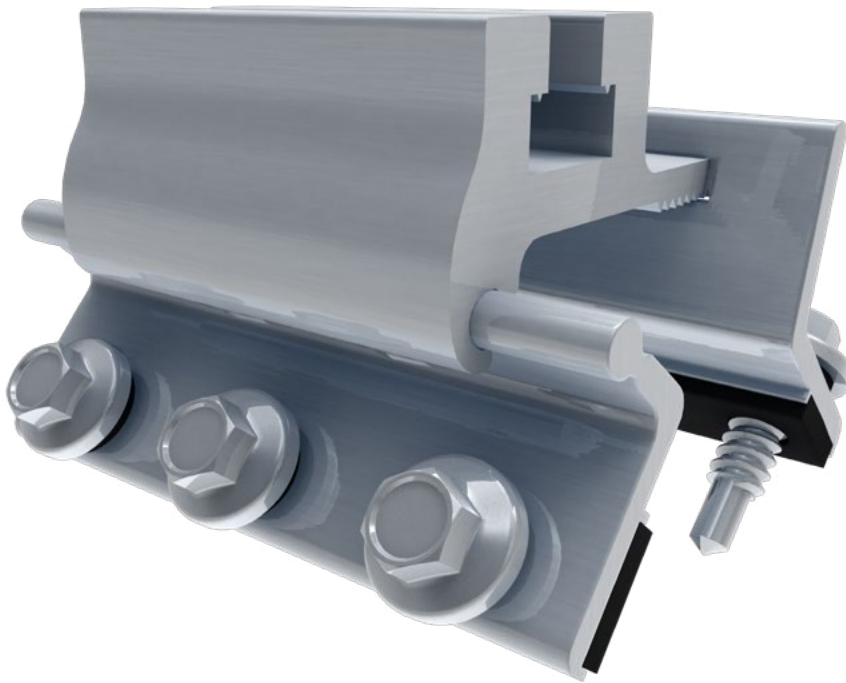
CORRUSLIDE

INSTALLATION GUIDE

QuickMount



IRONRIDGE



CORRUSLIDE

CorruSlide is engineered to universally fit nearly any corrugated metal roof profile. The adjustable hinged mount attaches to the sides of the panel ridges, avoiding low areas where standing water may form. CorruSlide provides North-South & East-West adjustability. The pre-installed EPDM gaskets and five self-tapping screws with EPDM washers ensure rugged, watertight performance. For use on corrugated roof panels with a minimum thickness of 26 gauge.

FEATURES

- Patented Watertight Technology
- Versatile hinge design fits nearly any profile
- Pre-installed EPDM gasket tape forms an Impenetrable moisture barrier
- Five self-tapping screws with EPDM washers
- Ideal for use in both commercial and residential applications

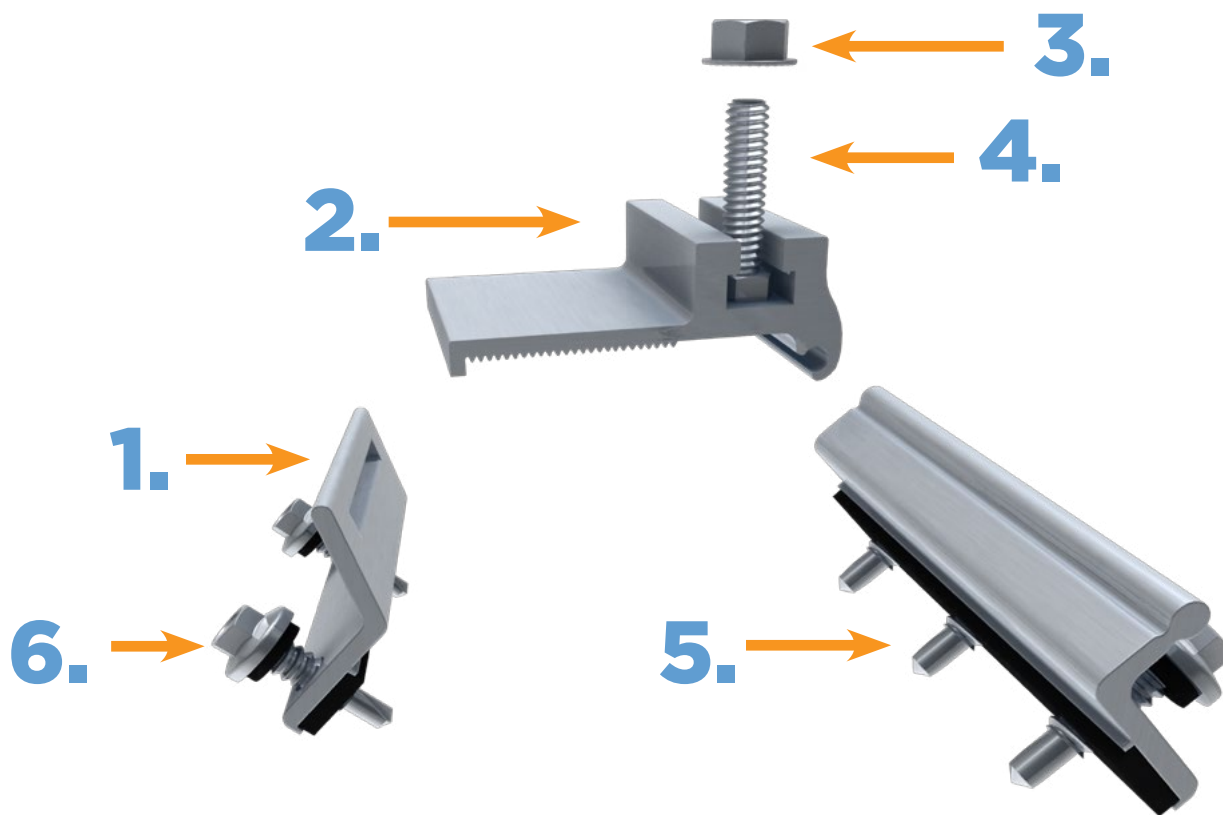
CORRUSLIDE

INSTALLATION GUIDE

QuickMount

IRONRIDGE

SYSTEM COMPONENTS CORRUSLIDE



- | | |
|-----------------------------|---|
| 1. CORRUSLIDE SLOT BRACKET | 4. 5/16"-18X1.25 HEX BOLT |
| 2. CORRUSLIDE TOP SLIDE | 5. CORRUSLIDE FLIPPER |
| 3. 5/16" SERATED FLANGE NUT | 6. 1/4"-14 SCREW WITH EPDM BONDED SEALING WASHER (5X) |

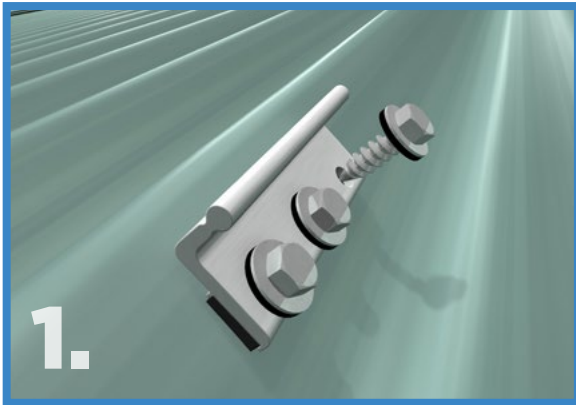
CORRUSLIDE

INSTALLATION GUIDE

QuickMount

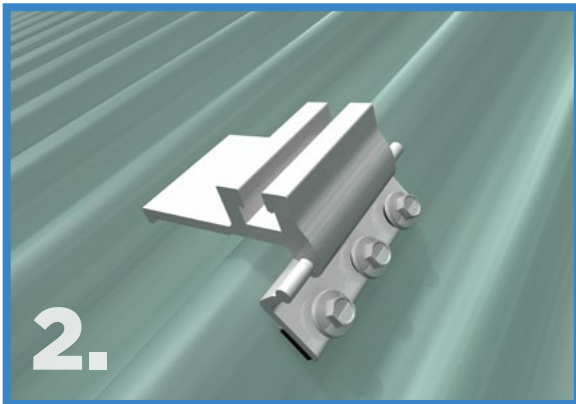
IRONRIDGE

INSTALLING SIMPLEGRIP-SQ



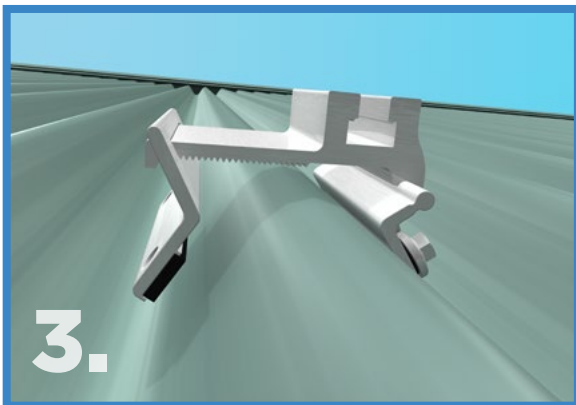
- 1. PRE-INSTALLATION NOTE:** Check one complete CorruSlide assembly on the roof panel for proper fit and mounting location prior to installing the screws.

INSTALLATION: Place the Corruslide-Flipper in position on the side of the metal roof corrugation and drill the 3 screws in to place.



- 2.** Tilt the CorruSlide Top Slide upward and slide into place over the installed Corruslide Flipper

- 3.** Slide the CorruSlide Slot Bracket over the serrated leg of the CorruSlide Top Slide. It is important to adjust the Top Slide so that it is level with the roof. Note that depending upon the roof profile it may be necessary to skip a ridge/valley.



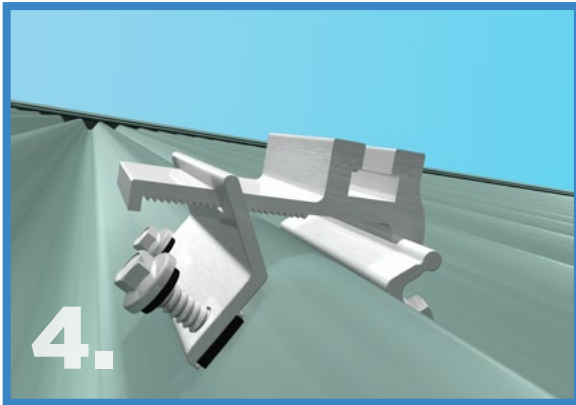
CORRUSLIDE

INSTALLATION GUIDE

QuickMount

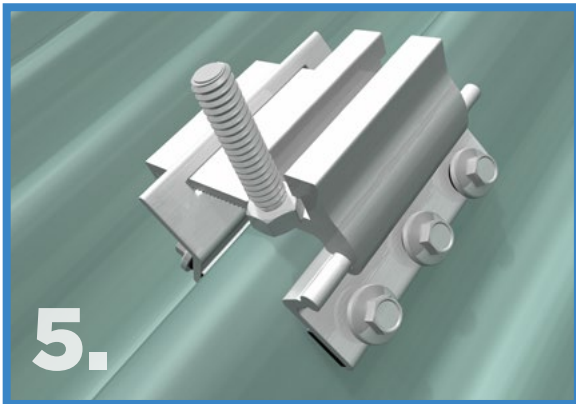
IRONRIDGE

INSTALLING SIMPLEGRIP-SQ

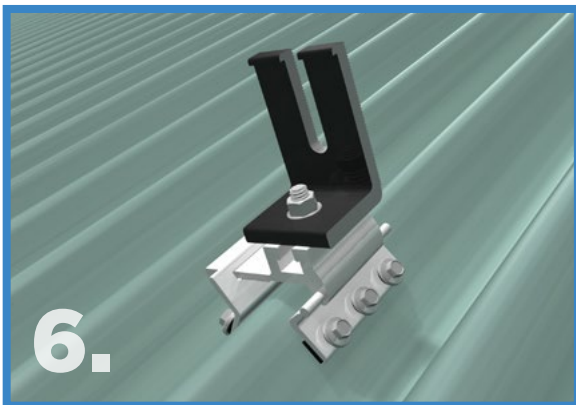


4. Secure the Corruslide Slot Bracket to the side of the roof corrugation using by drilling the remaining 2 screws into place.

NOTE: Once completely installed, the CorruSlide assembly will have some wiggle to in order to accomodate for thermal expansion and contraction of the roof due various temperature ranges.



5. Slide the 5/16" hex head bolt into the track on the top of the Corruslide Top Slide.



6. Thread the desired rail attachment bracket onto the bolt and secure the bracket to the corrugslide using the 5/16" serated flange nut.

CORRUSLIDE

INSTALLATION GUIDE

QuickMount

 IRONRIDGE

DISCLAIMER

This manual describes proper installation procedures and provides necessary standards required for product reliability. Warranty details are available on the website. All installers must thoroughly read this manual and have a clear understanding of the installation procedures prior to installation. Failure to follow these guidelines may result in property damage, bodily injury or even death.

IT IS THE INSTALLER'S RESPONSIBILITY TO:

- Ensure safe installation of all electrical aspects of the array. All electrical installation and procedures should be conducted by a licensed and bonded electrician or solar contractor.
- All work must comply with national, state and local installation procedures, product and safety standards, including the proper use of PPE.
- Comply with all applicable local or national building and fire codes, including any that may supersede this manual.
- Ensure all products are appropriate for the installation, environment, and array under the site's loading conditions.
- Use only QuickMount and IronRidge parts or parts recommended by QuickMount and IronRidge; substituting parts may void any applicable warranty.
- Review the Design Assistant and Certification Letters to confirm design specifications.
- Ensure provided information is accurate. Issues resulting from inaccurate information are the installer's responsibility.
- Ensure bare copper grounding wire does not contact aluminum and zinc-plated steel components, to prevent risk of galvanic corrosion.
- If loose components or loose fasteners are found during periodic inspection, re-tighten immediately. Any components showing signs of corrosion or damage that compromise safety shall be replaced immediately.
- Provide an appropriate method of direct-to-earth grounding according to the latest edition of the National Electrical Code, including NEC 250: Grounding and Bonding, and NEC 690: Solar Photovoltaic Systems.
- Disconnect AC power before servicing or removing modules, AC modules, microinverters and power optimizers.
- Review module and any 3rd party manufacturer's documentation for compatibility and compliance with warranty terms and conditions.
- Module mounting rails shall not be used as scaffolding, a roof jack, or any form of an anchoring point for roof personnel.
- Ensure that the roof is in good condition prior to installing any QuickMount or IronRidge components.

DISCLAIMER

CORRUSLIDE

INSTALLATION GUIDE



QuickMount

 IRONRIDGE



IRONRIDGE

Make Solar **Stronger**®

IronRidge®, an Enstall® company, designs and manufactures structural hardware for residential and commercial solar systems. For almost 30 years, we have worked closely with solar professionals to build strong, simple, and cost-effective products. The QuickMount brand family of products are manufactured and sold by IronRidge.

28357 INDUSTRIAL BOULEVARD HAYWARD, CA 94545

800-227-9523 | SALES@IRONRIDGE.COM