

# Universal Tile Flashing - QMTR-UTF

## Installation Instructions

for use with the QMTR-BM Base Mount (not included)

ITEM NO.	DESCRIPTION	QTY.
1	CAP SCREW, SERRATED FLANGE, HEX HEAD, 5/16"-18 X 1" UNC-2A, GRADE 8, MAGNI 525	1
2	FLASHING, CONE, 18"X18"X.032", 3003 AL, MILL	1
3	COLLAR, COUNTER FLASHING, 1-1/4" ID EPDM	1
4	POST, 1.25" OD X 4.5", 6063-T5/6063-T6, MILL	1
5	WASHER, SEALING, 5/16" ID X 1-1/4" OD, EPDM BONDED SS	1
6	CAP SCREW, HEX HEAD, 5/16"-18 X 1" UNC-2A, W/ CAPTIVE WASHER, 1"OD, 18-8 SS	1

NOTE: QMTR-BM BASE NOT INCLUDED

NOTE: AVAILABLE IN MILL FINISH ONLY

**Quick Mount PV<sup>®</sup>**

TITLE: QMTR-UTF4.5: UNIVERSAL TILE FLASHING, WITH POST

UNLESS OTHERWISE SPECIFIED: DIMENSIONS ARE IN INCHES TOLERANCES: FRACTIONAL: $\pm 1/8$ TWO PLACE DECIMAL $\pm .19$ THREE PLACE DECIMAL $\pm .094$	SIZE <b>A</b>	DRAWN BY: JPW	REV <b>3</b>
	DATE: 1/28/2020		
SCALE: 1:8		WEIGHT: 1.3938	SHEET 1 OF 2

DO NOT SCALE DRAWING

5 4 3 2 1

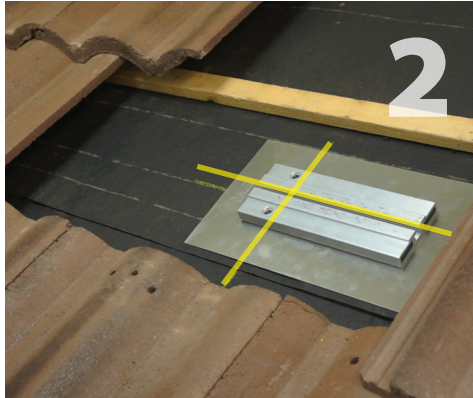
PROPRIETARY AND CONFIDENTIAL  
THE INFORMATION CONTAINED IN THIS DRAWING IS THE SOLE PROPERTY OF QUICK MOUNT PV. ANY REPRODUCTION IN PART OR AS A WHOLE WITHOUT THE WRITTEN PERMISSION OF QUICK MOUNT PV IS PROHIBITED. COPYRIGHT © 2020 QUICK MOUNT PV

## Instructions: QMTR-UTF4.5 - Universal Tile Flashing

**Installation Tools Required:** stud finder, tape measure, utility knife, drill with  $\frac{1}{8}$ " bit, impact driver with T-30 Torx bit, pliers, caulking gun, appropriate sealant compatible with EPDM rubber and roofing materials, roofing bar, right angle grinder with diamond blade or circular saw, hand broom.



Remove tile or tiles. Locate and mark the center of the rafter. Measure 7" up from bottom of the adjacent tiles and mark the location with a horizontal line across rafter.



Align the base plate over rafter so the lag holes line up with the rafter line and horizontal line aligns with the post groove. The orientation of the base plate can be flipped east-west for post location versatility of up to  $12\frac{1}{4}$ ". Mark location of lag holes on the roof.



Drill two pilot holes using  $\frac{1}{8}$ " bit to a depth of  $2\frac{3}{4}$ ". Be sure lags go into center of rafter for strongest attachment. Pilot holes reduce rafter splitting. Fill pilot holes with appropriate sealant and align lag holes over the pilot holes.



Waterproof at underlayment level according to roofing manufacturer instructions and Tile Roofing Association Guidelines.



Use T-30 Torx bit and impact driver to secure mount into rafter with provided hardware.



Insert the grade-8 serrated flange bolt into the bottom of the post. Slide post into base plate channel. Line up post with the hole in the Universal Tile Flashing. Tighten post until snug with pliers.



With a diamond blade on a right angle grinder or circular saw, cut tile to allow post to pass through. Place cut tile back in position. Insert post and tighten into place.

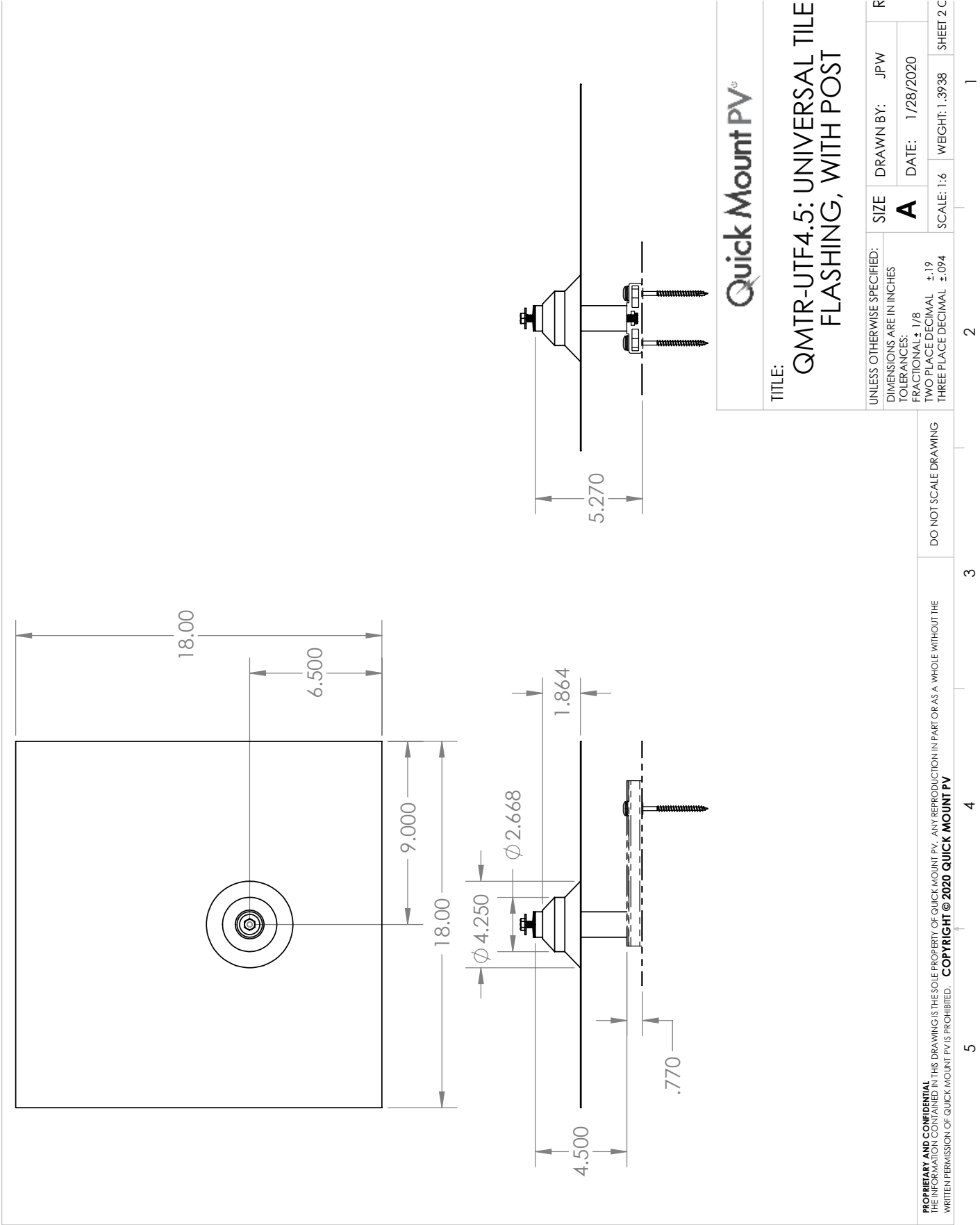


Install the 18"x 18" flashing. Pre-bend the flashing to follow the contour of the tile if curved. Apply sealant where post and flashing meet, and install EPDM counter flashing collar. Seal off the post from weather exposure with the racking hardware in the interim before racks are installed

**WARNING:** Quick Mount PV products are NOT designed and should NOT be used for anchoring fall protection equipment.

**CAUTION:** Prior to installation, check that proper screw embedment will be achieved for the necessary site load and roofing configurations.

Additional Dimensions





925-478-8269 | [www.quickmountpv.com](http://www.quickmountpv.com) | [tech@quickmountpv.com](mailto:tech@quickmountpv.com)  
2700 Mitchell Dr. | Walnut Creek, CA 94598